

## HEADTEACHER'S HELLO

Welcome back to a brand new school year! I hope you all had a wonderful summer filled with rest, fun and plenty of time to recharge. It's lovely to see the school buzzing with excitement again as we get ready for the year ahead. A very special welcome to the families joining us for the first time – we're delighted to have you as part of our school community. This term is already shaping up to be full of opportunities for learning, creativity, and fun and we can't wait to share it with you.

At Headley Park we understand the importance of communication between home and school as a key way in supporting the children. With this in mind please know that you are always welcome to contact us at the school about anything you feel relevant to your child. If you are ever unsure of who to talk to, speak to the school office and they will direct you accordingly.

Best wishes,

Mr Jones



## IMPORTANT DATES TERM 1

### September

**17th - 19th** Year 6 camp  
**17th** Mad science club start date  
**19th** Children can wear green to school  
 Macmillan Coffee morning 8.45-9.45am  
 Cake sale after school  
**22nd** Parent coffee morning (Anxiety)  
**23rd** EYFS new parent tours 9.30-10am  
**26th** Inset day (school closed to pupils)  
**30th** EYFS new parent tours 9.30-10am

### October

**6th** Be bright be seen assembly  
**7th** Be bright be seen Year 3 workshop  
**20th** Parent coffee morning (sleep difficulties)  
 Year 6 life skills trip

## WE ARE HEADLEY PARK AWARDS:

In Praise assembly, we celebrated the achievements of the following children. Well done all!

**Cameron:** Leon  
**Simpson:** Archie  
**Kenney:** Winston  
**More:** Penelope  
**Davy:** Bonnie  
**Brunel:** Erin B  
**Banksy:** Eliza  
**Long:** Hugh  
**Cousins:** lysha  
**Genge:** Isabella  
**Campbell:** Harrison  
**Stephenson:** Tallulah

## ENRICHMENT PASSPORTS

At Headley Park we are committed to learning around the curriculum. Our enrichment passports show the wide, rich range of new experiences all our children will receive during their time at primary school. Check them out on our website!



## ATTENDANCE

### Every Day Counts!

Coming to school every day makes a big difference to your child's learning and friendships. Even a few days off can mean missed lessons, lost confidence and gaps in understanding. We want every child to have the best chance to shine, and good attendance is the key. Let's work together to aim for at least 96% attendance – because every day really does count!

100% attendance= 0 days missed over the year.

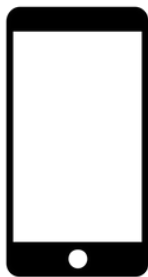
97% attendance= 1 week missed over the year.

94% attendance= 2 weeks missed over the year.

92% attendance= 3 weeks missed over the year.

90% attendance= 3.5 weeks missed over the year.

## ONLINE SAFETY



Please remember that children are not permitted to use mobile phones anywhere on site, including on the playground at drop off/pick up. Children will be asked to put them in their bag once they enter the school site. This is to keep everyone safe.

## COMMUNITY BREAKFASTS

Thank you for attending our community breakfasts so far this week. Next week we look forward to meeting Y1 and Y4 parents and carers.

Y1 Wednesday 17<sup>th</sup> September (8.45-9.30am)

Y4 Thursday 18<sup>th</sup> September (8.45-9.30am)

## ASSISTANT HEAD WELCOME

Hello everyone! I wanted to take a moment to introduce myself properly and say what a fantastic start to the school year it's been. I've really enjoyed beginning to get to know many of you at the school gates each morning and afternoon – thank you for making me feel so welcome.

Please don't hesitate to get in touch if you have any questions, concerns, or just want to say hello. I'm always happy to help and look forward to working with you to make this a brilliant year for all our children.

Mrs Allan



We will be holding a Macmillan Coffee Morning on **Friday 19th September from 8.45-9.45 in the small hall.** We would love to see you there!

We would really appreciate any donations of cakes or biscuits, either homemade or shop bought. If you cannot make the coffee morning, perhaps you can make **the cake sale**. This will be **straight after school** on the main playground.

**Children can wear green** on the 19th of September for a voluntary donation of £1.

Ways to give: Cash donation on the gate or at the coffee morning/cake sale. Alternatively, you can scan the QR code, at school on the day, to take you to our Just Giving page.

## YEAR GROUP EMAILS

If you need to contact your child's class teacher with a question or update then please use the emails below. Teachers will then respond within their working hours.

nursery@headleypark.bristol.sch.uk  
year1@headleypark.bristol.sch.uk  
year3@headleypark.bristol.sch.uk  
year5@headleypark.bristol.sch.uk

reception@headleypark.bristol.sch.uk  
year2@headleypark.bristol.sch.uk  
year4@headleypark.bristol.sch.uk  
year6@headleypark.bristol.sch.uk



# PHOTOS OF THE FORTNIGHT

Have a look at what we've been up to in and out of school over the last 2 weeks.

## EYFS

We've had a wonderful first week getting to know the children. Reception are now in full-time and are settling beautifully into the routines at Headley Park. Our nursery children have been exploring the provision with enthusiasm and are already beginning to form new friendships. This week, we've been sharing stories about our families, drawing pictures of them, and taking part in a range of fun fine motor activities.



## YEAR ONE

In Art, Year 1 are learning about drawing and the artist Albrecht Durer. We used different drawing tools, applying different pressure, observing which made lighter marks and which made darker, bolder marks.



## WORD OF THE FORTNIGHT GEOGRAPHY

VAST

*Something that is huge!*



vast

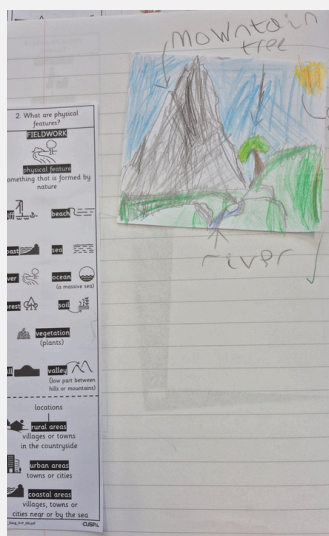
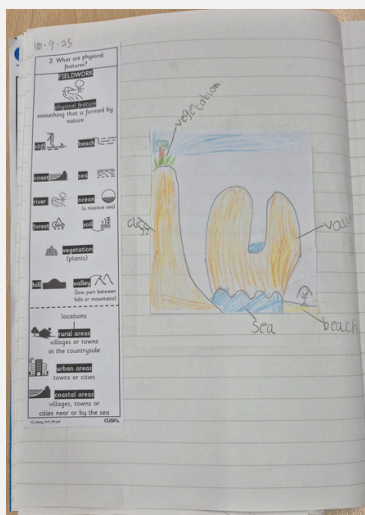




## YEAR TWO

In Geography this week, Year 2 have been learning about physical features of the world.

The children have enjoyed drawing diagrams to show features such as mountains, rivers, valleys, lakes, beaches, forests, and deserts. This hands-on activity has helped them to recognise and name different landforms, while also building their understanding of how these features can be seen in different parts of the world.



## WORD OF THE FORTNIGHT GEOGRAPHY

### SHELTER

*A place where someone lives.*



shelter

## YEAR THREE

In year 3 we have had a fantastic start to the new year. We have started to learn about the Stone Age in History, which we also linked to art when we looked at early cave paintings. We have also started reading Greta and the Giants and have been discussing ways to look after the environment. The children are looking forward to learning French for the first time this term.



## WORD OF THE FORTNIGHT GEOGRAPHY

### HARBOUR

*An area on the coast where ships can shelter from the sea.*

harbour



## YEAR FOUR

Year 4 have been developing their observation skills by taking their sketchbooks into the playground. The children focused on drawing what they could see around them, looking carefully at shapes, lines and details in the environment. This gave them the chance to practise life drawing in a fun and creative way outdoors.



### **WORD OF THE FORTNIGHT GEOGRAPHY**

#### **CIRCUMNAVIGATE**

*To sail or travel all the way around something, eg: the world*

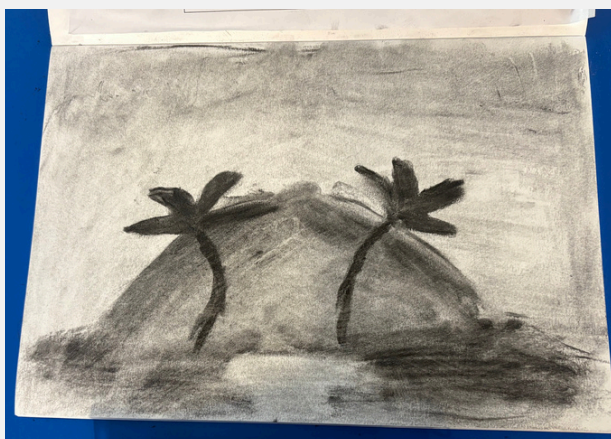
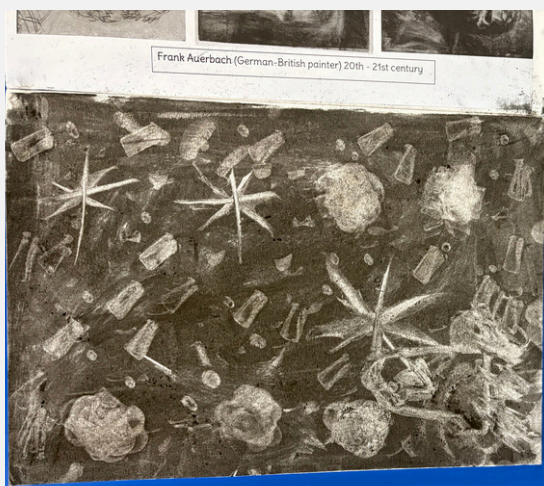
circumnavigate



## YEAR FIVE

This week, Year 5 have been experimenting with an exciting art technique called subtractive art. Using charcoal to shade their paper and then erasers to "draw with light," the children explored how highlights and shadows can transform an image.

They began by covering their page with soft charcoal before using rubbers to lift away areas, revealing shapes, textures, and glowing effects. This technique encouraged them to think creatively about light and dark, while also experimenting with blending and mark-making.



### **WORD OF THE FORTNIGHT GEOGRAPHY**

#### **EQUATOR**

*An imaginary line around the earth at equal distances from the poles. It divides the earth into the northern and southern hemispheres.*

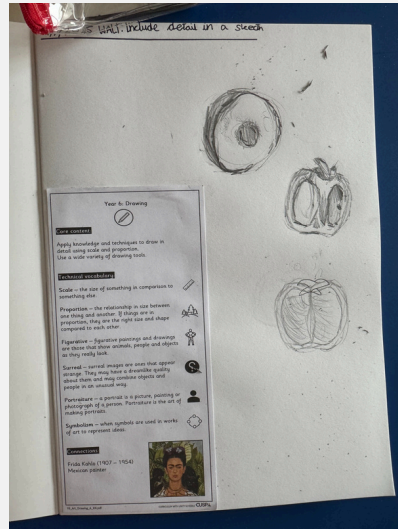
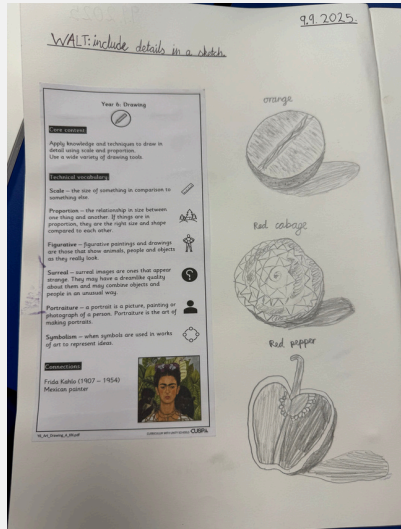
equator





## YEAR SIX

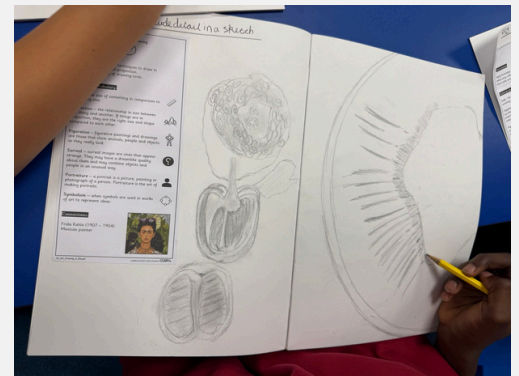
Year 6 started their Art topic of 'Drawing' this week by practising observational drawing, adding in detail.



## WORD OF THE FORTNIGHT GEOGRAPHY DIASTER

*A catastrophe that causes extensive damage.*

disaster



## SPORTS CORNER!

A note from Mr B;

I'm delighted once again to announce that we are officially a 'School Games Mark PLATINUM School' for the third consecutive year (one of very few schools across Bristol to achieve this).



Join us every Tuesday and Thursday on the field at 8.15am for our mile run.

Keep fit and win prizes!

PE for Term 1 across **Years 1-6** is:

Outdoor - Tag Rugby  
Indoor - Athletics

WHAT’S ON OFFER IN OUR COMMUNITY;

Rainbows Stay and Play Groups Expansion!

We are beyond thrilled to announce that our Rainbows Stay and Play groups are expanding to enable us to offer more sessions across the week due to extremely high demand!

For anyone not aware (!) Rainbows is a stay and play group that celebrates strengths, interests and differences.

The group is for pre-school children who have additional needs, who are neurodivergent and/or disabled, and their families.

It provides:

- an opportunity for parents to meet
- a space for children to socialise and explore a variety of resources
- time to have fun, play and learn

In addition to the current sessions at Hartcliffe, Avonmouth and Oldbury Court there will be additional sessions at St Werburgh's, Southmead and Stockwood - see table with contacts:

	Morning – 9.00-11.00am	Afternoon – 1.00-3.00pm
Tuesday	Avonmouth Children's Centre BS11 9LG Ellie Hallett: 07741188025	St Werburgh's Nursery School BS2 9UX (from 9 <sup>th</sup> September) Sally Stevens: 07345446886
Wednesday	Oldbury Court Children Centre BS16 2QS Helen Millard: 07500954106	
Thursday	Hartcliffe Children's Centre BS13 0JW Helen Cottrell: 07825315732	Southmead Children Centre BS10 5PW Ellie Hallett: 07741188025
Friday	Stockwood Children Centre BS14 8DQ Katie Reece-Wolsey: 07393782917	

# School Flu Consent Form 2025/26



**Scan the QR code above to give consent for the  
Autumn/ Winter 2025 school Flu programme**

- For children in Reception – Year 11 in September 2025 (all children in SEND schools)
- Any questions Please contact [sirona.sch-imms@nhs.net](mailto:sirona.sch-imms@nhs.net) or 0300 1245515

Service provided by





# apply for a **secondary school** place for the school year **2026–2027**

*If your child was born between 1 September 2024 and 31 August 2025  
you will need to apply for a school place by 31 October 2025.*



TRADING  
WITH  
SCHOOLS

**BRISTOL**  
LEARNING CITY

[www.bristol.gov.uk/schooladmissions](http://www.bristol.gov.uk/schooladmissions)



## What do I need to do to apply for a school place?

- Check out the guidance on applying to schools – available at [www.bristol.gov.uk/schooladmissions](http://www.bristol.gov.uk/schooladmissions), or by contacting School Admissions. The guidance contains details on how & when to apply, information on each school along with their admissions policy and oversubscription criteria. With the mix of different types of school from Church schools, Foundation schools, Academies, Free Schools and Community secondaries the admissions policy could be different for each school you put as a preference so it's important to ensure you check this carefully.
- Some schools require supplementary forms to be completed as well as the common application form. Make sure you check if this applies to the school(s) you are interested in.
- Visit the schools. All schools hold open days. School websites provide details of open evenings and other events.
- Look at the school's prospectus and its website which are useful sources of information.
- You can name up to three school preferences. We advise you to name more than one school.
- Make sure you apply on-time. The deadline is 31 October 2025.

### School Admissions (CH)

Bristol City Council  
PO Box 3399, Bristol, BS1 9NE  
[www.bristol.gov.uk/schooladmissions](http://www.bristol.gov.uk/schooladmissions)  
e [school.admissions@bristol.gov.uk](mailto:school.admissions@bristol.gov.uk)  
t 0117 903 7694



## Why apply online?

- The system helps you by checking for errors.
- There is no risk that your application will be lost in the post.
- It is quick and easy to do.
- You will get an immediate email confirming that your application has been received.
- You will receive an email notification of the outcome of your application on the same day as the offer letters are posted.
- The system is available 24 hours a day until the final submission time of midnight on 31 October 2025.

Apply online [www.bristol.gov.uk/schooladmissions](http://www.bristol.gov.uk/schooladmissions)

# A guide for **parents and carers** on applying for a **primary school** place for the school year **2026–2027**

If your child was born between 1 September 2021 and 31 August 2022  
you will need to apply for a school place by 15 January 2026



TRADING  
WITH  
SCHOOLS **BRISTOL**  
LEARNING CITY

[www.bristol.gov.uk/schooladmissions](http://www.bristol.gov.uk/schooladmissions)



## What do I need to do to apply for a school place?

- Check the guidance on applying for schools – available at [www.bristol.gov.uk/schooladmissions](http://www.bristol.gov.uk/schooladmissions), or by contacting School Admissions. The guidance contains details on how and when to apply, information on each school along with their admissions policy and oversubscription criteria.

If your child is not currently at school from Church schools, Foundation schools, Academies, Free Schools and Community schools the admissions policy could be different for each school you put as a preference so it's important to ensure you check this carefully. Some schools require

**School Admissions (CH)**  
Bristol City Council  
PO Box 3399, Bristol, BS1 9NE  
[www.bristol.gov.uk/schooladmissions](http://www.bristol.gov.uk/schooladmissions)  
e [school.admissions@bristol.gov.uk](mailto:school.admissions@bristol.gov.uk)  
t 0117 903 7694



- supplementary forms to be completed as well as the common application form. Make sure you check if this applies to the school(s) you are interested in.
- Visit the schools. All schools hold open days. Contact the school directly for further details on open days.
- Look at the school's prospectus and its website which are useful sources of information.
- You can name up to three school preferences. We advise you to name more than one school.
- Make sure you apply on-time. The deadline is 15 January 2026.

## Why apply online?

- The system helps you by checking for errors. There is no risk that your application will be lost in the post. It is quick and easy to do.
- You will get an immediate email confirming that your application has been received.
- You will receive an email notification of the outcome of your application on the same day as the offer letters are posted.
- The system is available 24 hours a day until the final submission time of midnight on 15 January 2026.

Apply online [www.bristol.gov.uk/schooladmissions](http://www.bristol.gov.uk/schooladmissions)